



---

## Bathing establishment Fact Sheet

Bathhouse name	Ammare Sirena
Address	Via Roma 17
City	Castiglione della Pescaia (Gr)
Contacts	+39 0564 935596
Website	<a href="http://www.ammarebagnosirena.it">www.ammarebagnosirena.it</a>

**TESTED BY:** [Handy Superabile - Social Promotion Association](#) in summer 2023

**Please note** The following information refers to the verification date shown at the bottom of each card. **The Association** is not responsible for any significant changes made by the property after the visit.

### Summary

Bathing establishment Fact Sheet.....	1
Arrival at the facility .....	2
Private/public parking.....	2
Pathway from the parking lot to the main entrance .....	2
Reception .....	3
Bar/restaurant .....	4
Internal Pathways and common services .....	5
Internal Pathways.....	5
Toilet and shower accessible to guests with reduced mobility.....	5
Changing room.....	7
Beach.....	7
Children's play area.....	9
Swimming pool.....	9
Doctors' Offices/Healthcare Facilities .....	9

---


Project carried out with the contribution of the





**Arrival at the facility**

**Private/public parking**

Presence of private parking	NO
Public parking nearby	YES
Presence of parking space reserved for people with disabilities	YES
Type of parking surface	ASPHALT
	

**Pathway from the parking lot to the main entrance**

Pathway from the car park to the entrance	Flat
There are markers and tactile maps	NO
Usable door/entrance width	more than 90 cm



Project promoted by



Regione Toscana



## Reception

Umbrella booking system	<input type="checkbox"/> Via web <input checked="" type="checkbox"/> By phone <input checked="" type="checkbox"/> On-site
Presence of multilingual staff	YES
Presence of plant plan with key to services available	NO
Presence of visuo-tactile map	NO
Bulletin board/information panels at an average height of 130 cm in a well-lit area and font size at least 14 dpi with a contrast ratio greater than 4.5:1	NO
The staff attended training courses on welcoming people with different disabilities	NO

Project carried out with the contribution of the

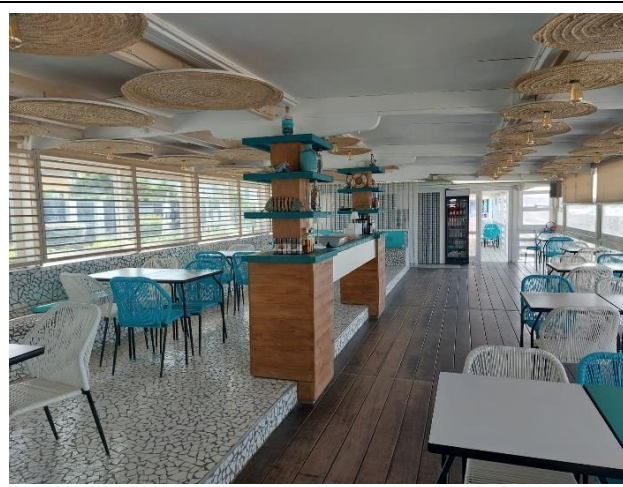


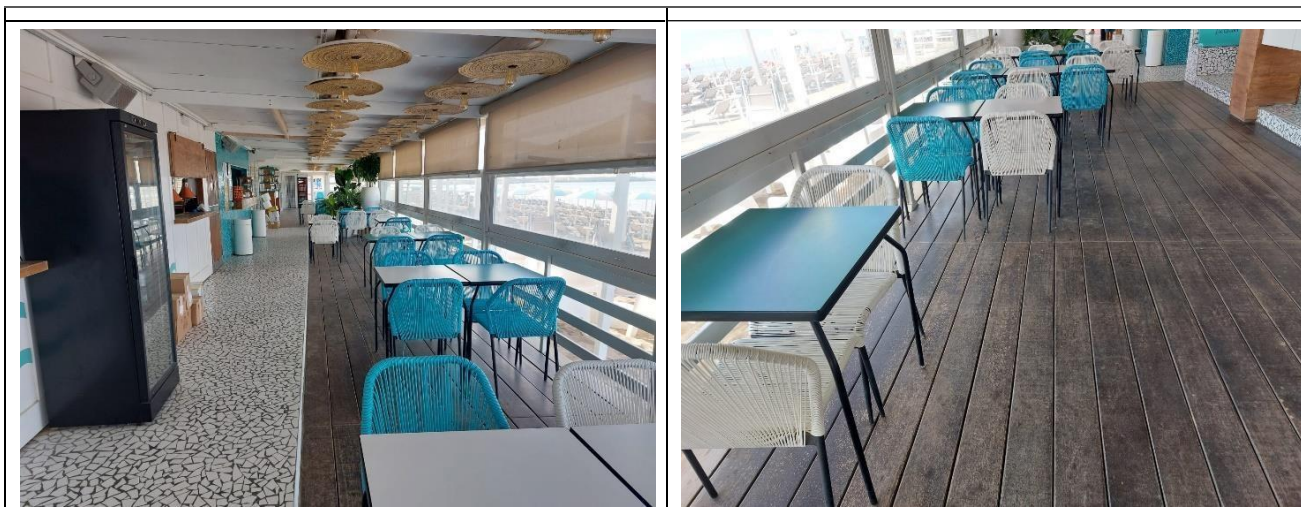
Presidenza del  
Consiglio dei Ministri  
Ministro per la disabilità



## Bar/restaurant

Type of venue	Bar/restaurant
Access to the premises	Flat
Usable door/entrance width	more than 90 cm
Bar counter	height greater than 100 cm
Types of tables	4- legged
Space underneath the tables from the floor	more than 70 cm
Multilingual menu	YES
Menus with large print fonts	NO
Braille menu	NO
Table service for people with disabilities	YES
Availability of gluten-free food	<input checked="" type="checkbox"/> bread <input type="checkbox"/> pasta <input type="checkbox"/> biscuits <input type="checkbox"/> ice cream <input checked="" type="checkbox"/> Pre-packaged foods





## Internal Pathways and common services


### Internal Pathways

Indicate whether the pathways connecting the entrance to the beach are flat or with ramps in addition to those already described	Flat paths
--	------------

### Toilet and shower accessible to guests with reduced mobility

Number <b>of toilets</b> accessible/usable by guests with reduced mobility	1
Access to the premises	Flat
Usable width of the entrance door	90 cm
Toilet height	50 cm
Open front toilet seat	YES
Support handles	to the left of the toilet
Flexible hand shower at the side of the toilet	NO
Free space on the sides of the toilet	left more than 90 cm



	right 22 cm frontal more than 90 cm
Electric doorbell/phone	YES
Washbasin with space underneath for wheelchair	more than 70 cm
Height from the ground on the bottom edge of the mirror	not sufficient for use by a person in a wheelchair
Baby changing table	YES
	
Accessible <b>shower</b> available for guests with reduced mobility	SI separated from the toilet room
Access to the shower room if separated from the toilet room	Flat
Useful width of the door/entrance gate if separated from the toilet room	more than 90 cm
Shower type	open-type
Floor-level shower	YES
Shower chair	missing
Grab bar	NO
Presence of shower head or ups and downs	fixed shower head
Electric doorbell/phone	NO



### Changing room

Accessible changing room available for guests with reduced mobility	NO
---	----

### Beach

Type of beach	sand
Access to the beach	by ramp length 250 cm, width 140 cm, slope 19.5%
Walkway to reach the umbrellas	YES
Type of walkway	PVC
Walkway width	90 cm





<p>Removable Platform between the walkway and the umbrella station to facilitate the passage and parking wheelchair</p>	<p>YES</p>
<p>Amphibious beach chair available for helping people with reduced mobility to enjoy swimming (owned by the establishment or by association)</p>	<p>YES</p>





### Children's play area

Children's play area	missing
----------------------	---------

### Swimming pool

The property has a swimming pool	NO
----------------------------------	----

### Doctors' Offices/Healthcare Facilities

Hospitals near the facility	<b>Ospedale Misericordia</b> via Senese, 161 Grosseto at 25 km
Other Healthcare Facilities	<b>Presidio socio sanitario ASL</b> via Roma 1, Castiglione della Pescaia, tel 056443921 - 0564/43921 – 0564/483080 <b>Dialysis service on holiday</b> at Ospedale Misericordia Grosseto U.O. Nephrology and Dialysis Tel. 0564 485.218

TESTED BY: **Handy Superabile Social Promotion Association in summer 2023**

